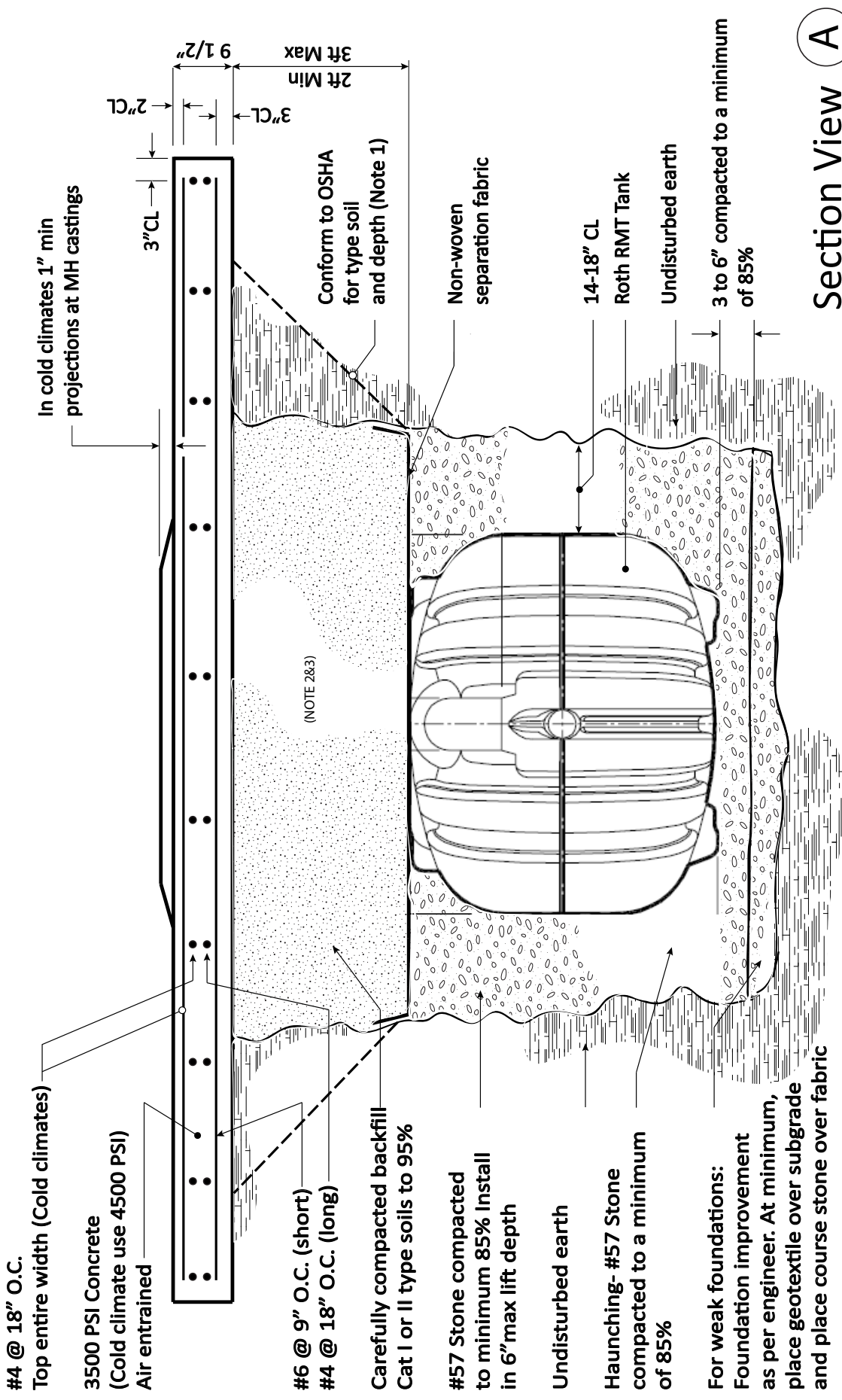




Roth MultiTank®

Installation Instructions Supplement

H2O Traffic Rated Installation



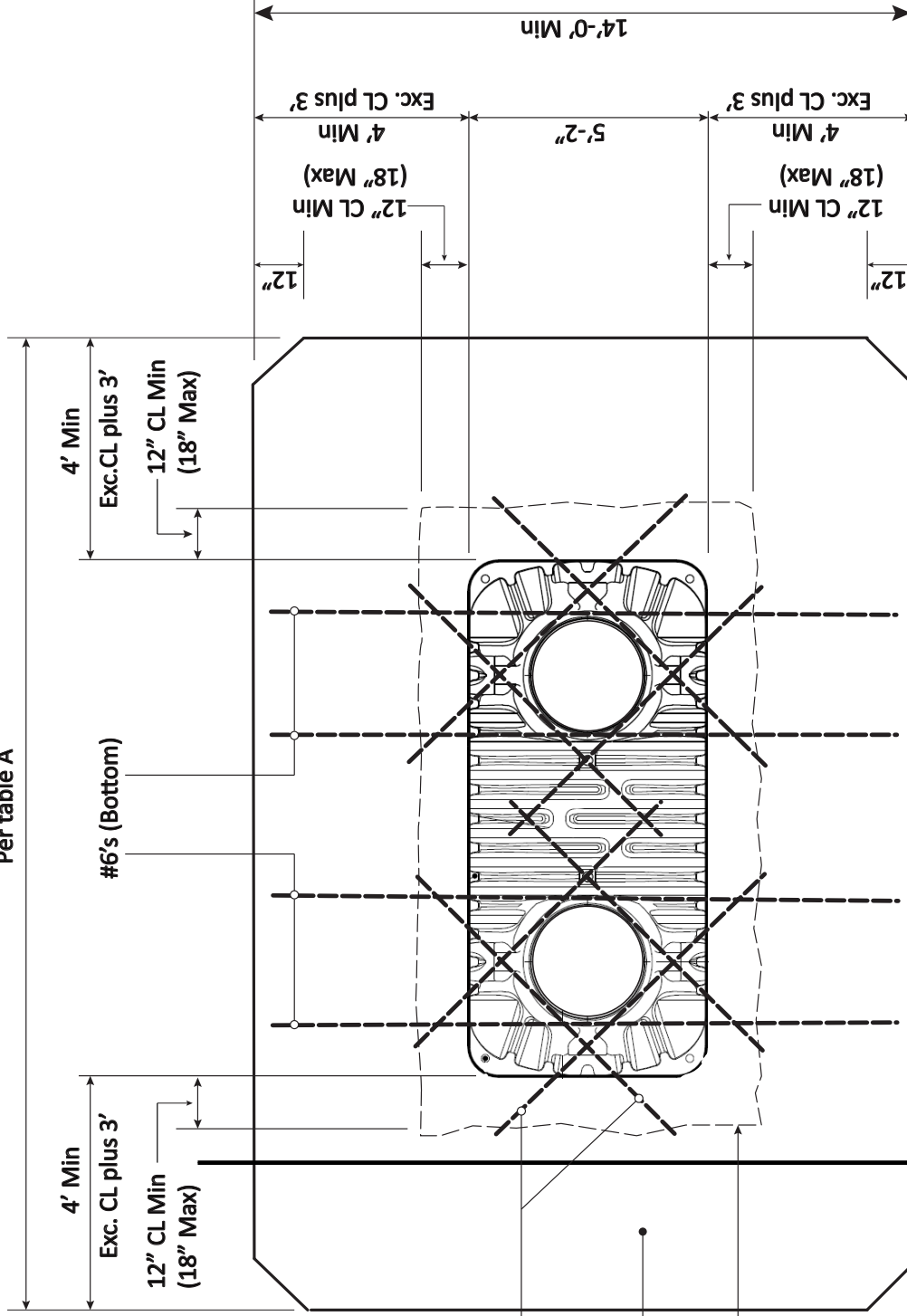
Section View **A**

Roth RMT H20 Traffic Rated Installation

Table A

Min Overall Slab Length
RMT-500
RMT-750
RMT-1000E
RMT-1060
RMT-1250
RMT-1500

Per table A



#4's 2" from top 8ft long

Concrete slab

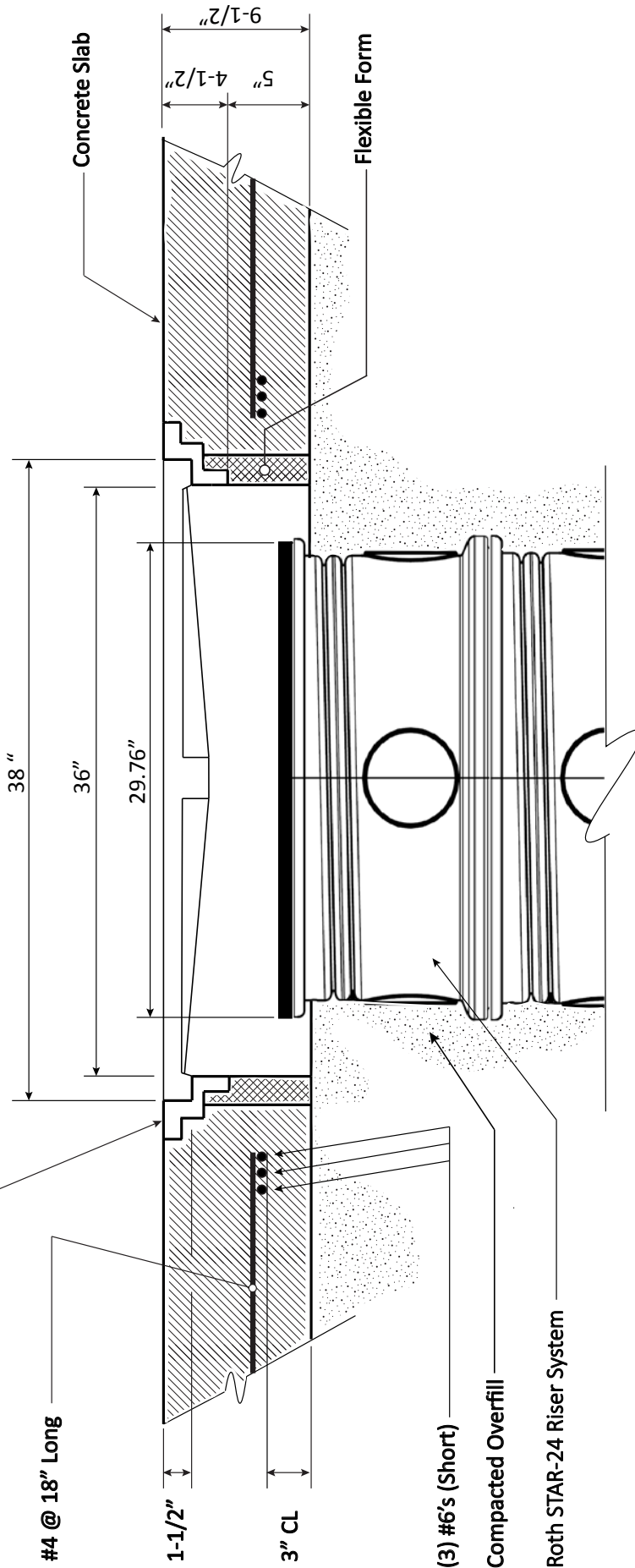
Excavation limit

Reinforcing rod matrix shown above addresses the critical load bearing areas directly above the tank. The balance of the slab must also include reinforcement rod, size and spacing appropriate for H20 load rated surfaces. This is conceptually included in the section views on Pgs 1, 3, 4 and 5.



Plan View

Neenah Foundry R-6095
Manhole frame and solid lid
(See Note 1)



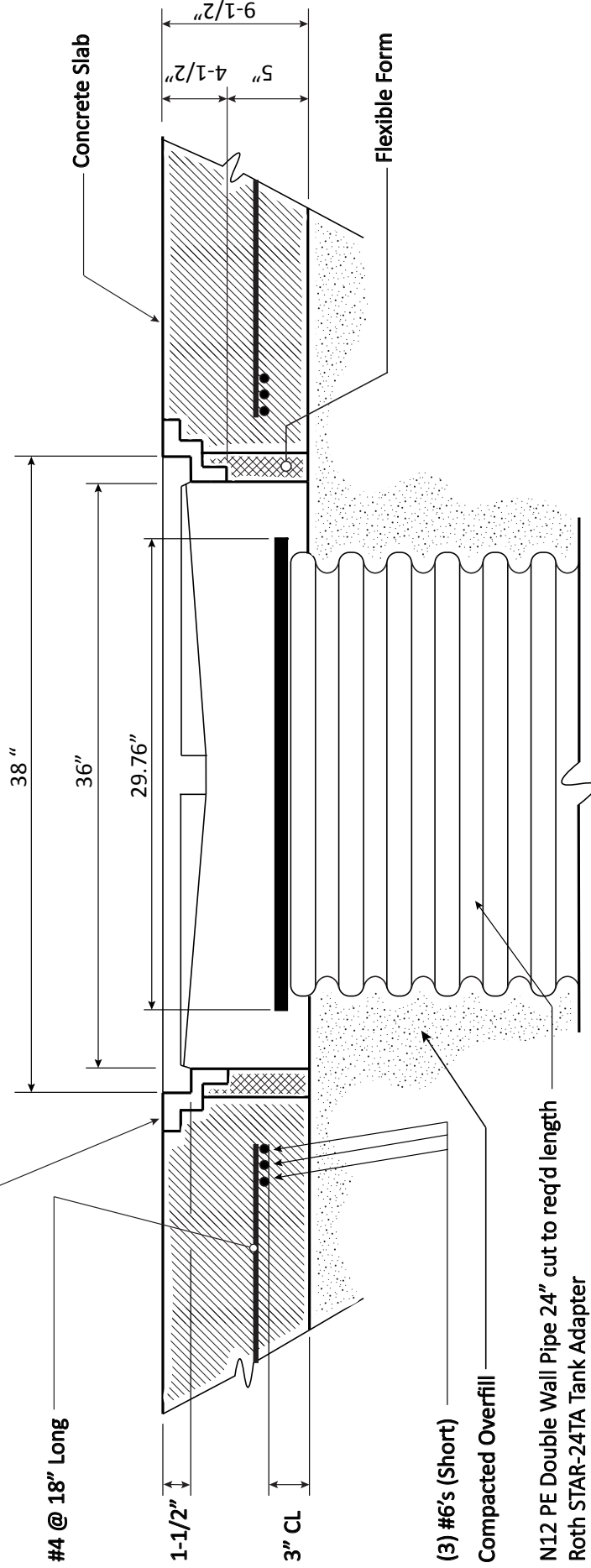
Notes:

- 1) Any AHJ approved Heavy Duty manhole frame and solid lid may be used in this configuration.
- 2) Soil removed for purpose of trench protection shall be replaced by Category I or II soils compacted to 95% std Proctor in max 6 inch lifts. (see pg 6)
- 3) Place backfill over tank and compact in 6 inch lifts. Do not place heavy compacting equipment directly over tank for first 24" of fill.
- 4) #57 stone or similar DOT base mix consolidated with a mechanical plate tamper may be placed in lieu of category I of II soils. Separation fabric not required in this case.
- 5) Roth approved third party riser systems may also be used in this configuration.

**Detail of Slab Manhole
Roth STAR Riser System**



Neenah Foundry R-6095
Manhole frame and solid lid
(See Note 1)



#4 @ 18" Long

1-1/2"

3" CL

(3) #6's (Short)

Compacted Overfill

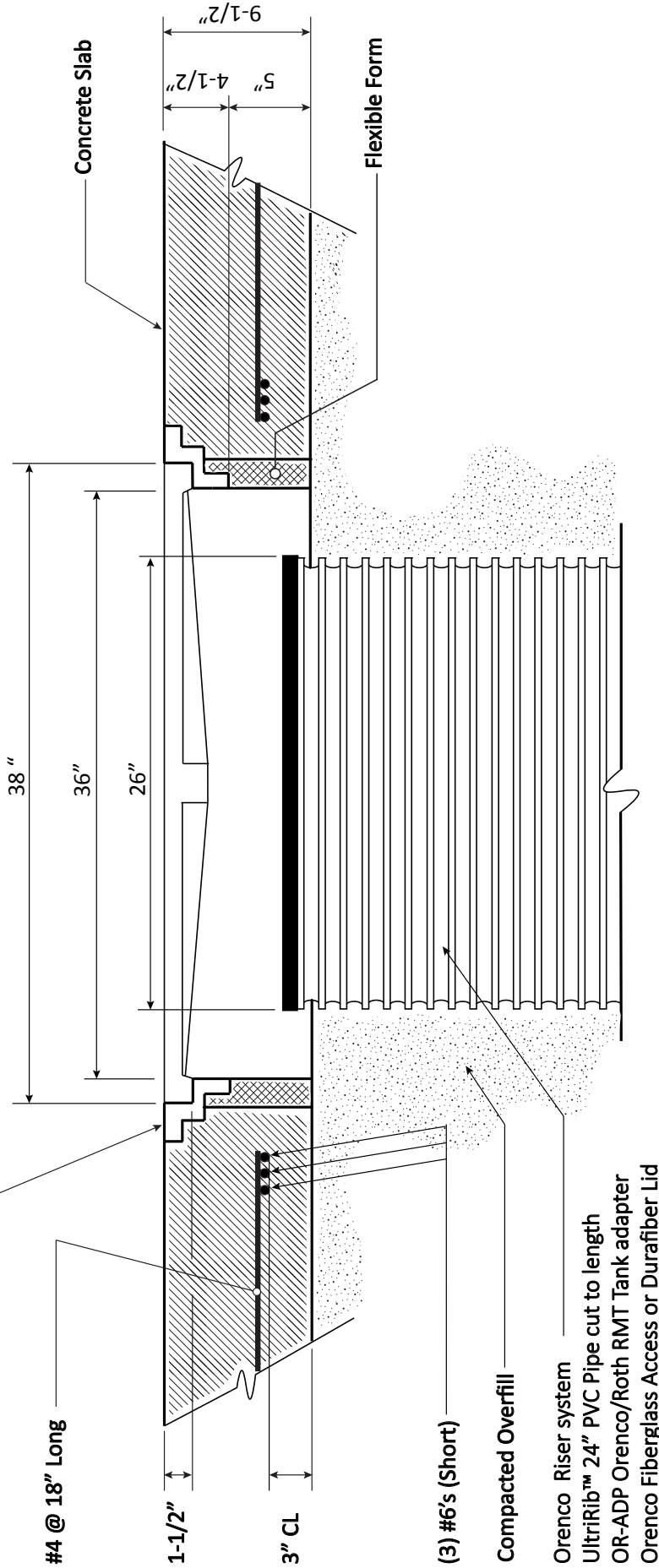
N12 PE Double Wall Pipe 24" cut to req'd length
Roth STAR-24TA Tank Adapter
Roth STAR-24P Plug Cover

Notes:

- 1) Any AHJ approved Heavy Duty manhole frame and solid lid may be used in this configuration.
- 2) Soil removed for purpose of trench protection shall be replaced by Category I or II soils compacted to 95% std Proctor in max 6 inch lifts. (see pg 6)
- 3) Place backfill over tank and compact in 6 inch lifts. Do not place heavy compacting equipment directly over tank for first 24" of fill.
- 4) #57 stone or similar DOT base mix consolidated with a mechanical plate tamper may be placed in lieu of category I of II soils. Separation fabric not required in this case.
- 5) Roth approved third party riser systems may also be used in this configuration.

Detail of Slab Manhole N12 PE Pipe Riser System

Neenah Foundry R-6095
Manhole frame and solid lid
(See Note 1)



Notes:

- 1) Any AHJ approved Heavy Duty manhole frame and solid lid may be used in this configuration.
- 2) Soil removed for purpose of trench protection shall be replaced by Category I or II soils compacted to 95% std Proctor in max 6 inch lifts. (see pg 6)
- 3) Place backfill over tank and compact in 6 inch lifts. Do not place heavy compacting equipment directly over tank for first 24" of fill.
- 4) #57 stone or similar DOT base mix consolidated with a mechanical plate tamper may be placed in lieu of category I of II soils. Separation fabric not required in this case.
- 5) Roth approved third party risers systems may also be used in this configuration.

Detail of Slab Manhole Orenco/UltraRib Riser System

Soil classification and definitions

Soil	Representative soil types		Percent Compaction Standard Proctor
	USCS	AASHTO	
Gravelly Sand Category I	SW, SP GW, GP	A-1, A-3	95%
Sandy Silts and Clays Category II	GM, SM, ML, GC, SC (with less than 200% passing #200 sieve)	A-2, A-4	95%

Unified Soil Classification System

Category I

SW- Well-graded sands, gravelly sands, little or no fines

SP- Poorly-graded sands, gravelly sands, little or no fines

GW- Well-graded gravels, gravel-sand mixtures, little or no fines

GP- Poorly-graded gravels, gravel-sand mixtures, little or no fines

Category II

GM- Silty gravels, gravel-sand-silt mixtures

SM- Silty sands, sand-silt mixtures

ML- Inorganic silts and very fine sands, rock flour, silty or clayey silts with slight plasticity

GC- Clayey gravels, gravel-sand-clay mixtures

SC- Clayey sands, sand-clay mixtures

AASHTO Soil Classification

Category I

Sieve analysis No. 10

A-1-a 50

A-1-b 50

A-3 51 (min)

No.200 (max % passing)

15

25

10

Category II

A-2 ---

A-4 ---

35

36 (min)