

Submittal Data Sheet



Roth Part #	Item Description	Manufacturer
Various	Aluminum Heat Transfer Plates	Roth Industries, Inc.

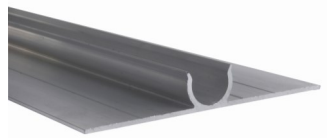
Job _____ Engineer _____
 Contractor _____ Representative _____

Application:
 Radiant distribution plates for under sub-flooring, walls and ceilings.
 Designed to hold radiant tubing and evenly disburse heat energy.

Technical Specifications:

Thermo-Fin Plates

- Material - 15 gauge extruded aluminum
- Dimensions - 4" x 48" (101.6mm x 1219.2mm)
- Two pipe sizes - 3/8" or 1/2"



Heat Transfer Plates - Single Groove

- Material - 26 gauge stamped aluminum sheet
- Dimensions - 5" x 24" (127mm x 609.6mm)
- Pipe sizes - 3/8", 1/2" & 5/8"



Heat Transfer Plates - Double Groove

- Material - 26 gauge stamped aluminum sheet
- Dimensions - 13" x 24" (330.2mm x 609.6mm)
- Pipe sizes - 3/8", 1/2" & 5/8"



	Part #	Description	Weight lbs. (kg)
<input type="checkbox"/>	3340034332	Thermo-Fin Transfer Plates - 3/8" x 4' 20/ box	25 (11.4)
<input type="checkbox"/>	3340034333	Thermo-Fin Transfer Plates - 1/2" x 4' 20/ box	25 (11.4)
<input type="checkbox"/>	3340034133	Heat Transfer Plates - Single Groove 50/ box	15 (6.8)
<input type="checkbox"/>	3340034233	Heat Transfer Plates - Double Groove 50/ box	30 (13.6)

Effective Date: November 2011

Roth Industries, Inc. 268 Bellew Avenue South Watertown, NY 13601
 Telephone: US (888) 266-7684 Canada (800) 969-7684 Fax: US & Canada (866) 462-2914
 Visit our website: www.roth-america.com